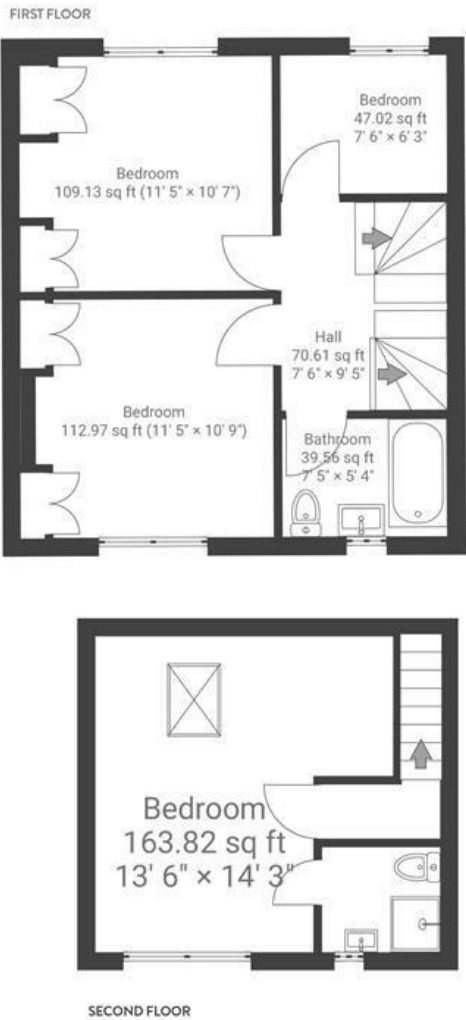
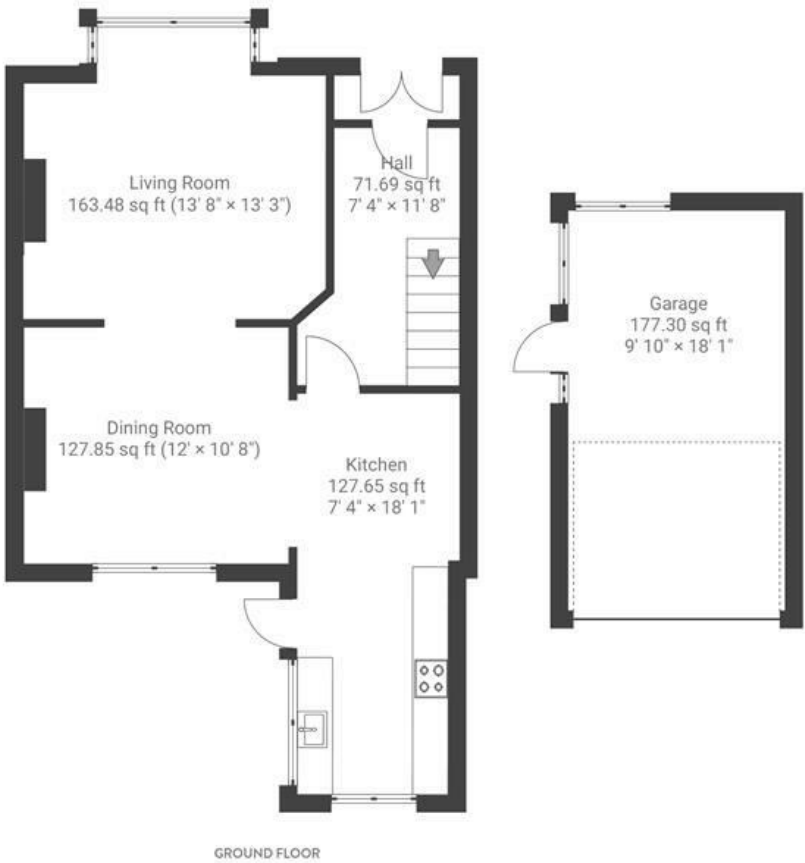


# Coaley Road

SHIREHAMPTON

APPROXIMATE FLOOR AREA  
102.9 SQM / 1108 SQFT



Boardwalk

# Coaley Road , BRISTOL



£450,000



BS11 9XD



4 Bedrooms



2 Bathrooms

*"We love the open plan feel downstairs, particularly when light floods through in the morning and evening. We will miss lazy breakfasts sat on the sunny decking by the pond, picking blackberries on the back lane, and hosting family and friends. We've loved the access to green space nearby, and how private the house and garden feel."*

